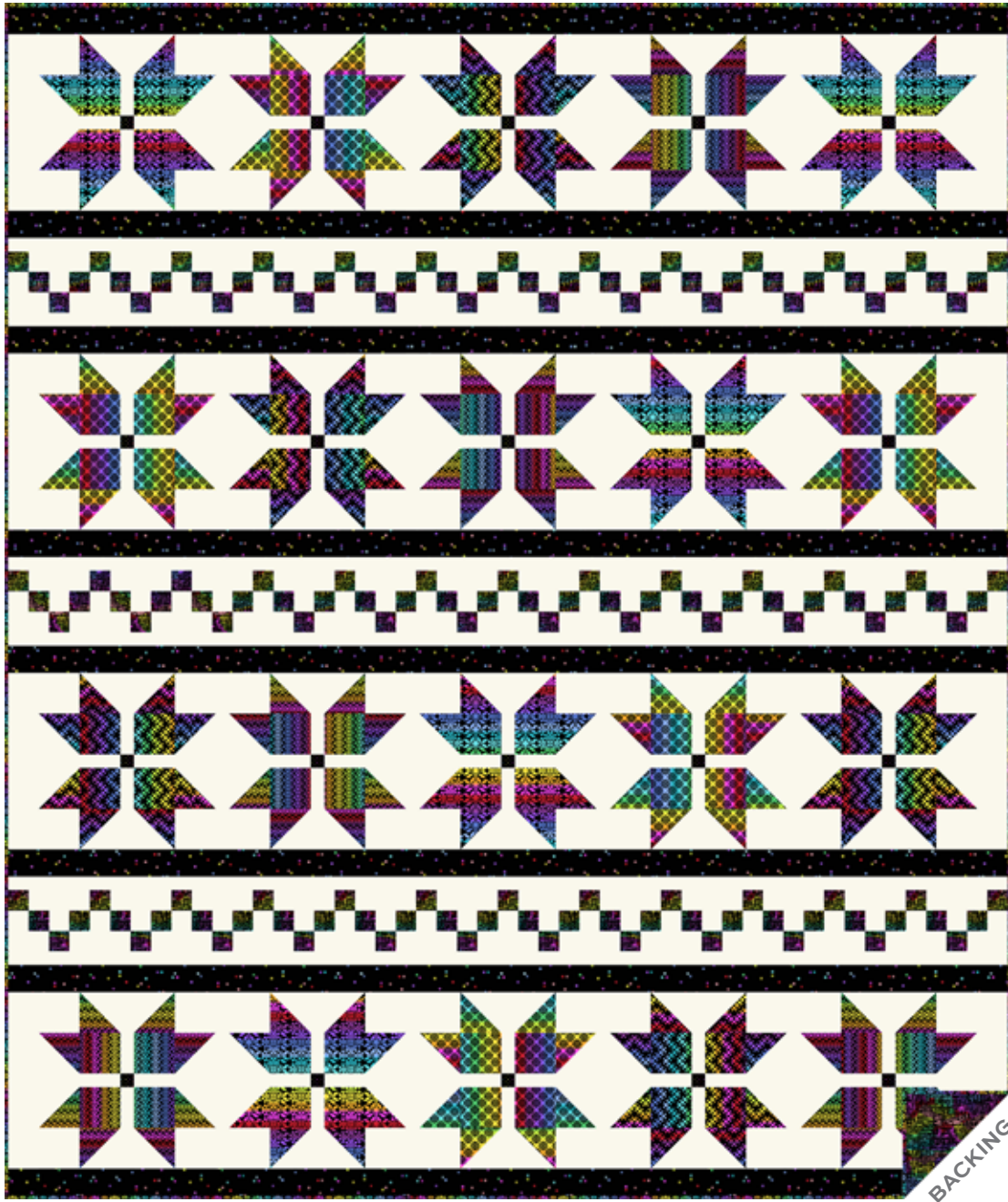


Rainbow Wonderland

ANDOVER FABRICS



100
years



Nordic Woods Quilt designed by: **Janet Houts**

Quilt Size: **73½" x 87½"** • Skill Level: **Beginner**

andover

•
•
• makower.uk
•

Free Pattern Download Available

1384 Broadway New York, NY 10018
Tel. (800) 223-5678 • andoverfabrics.com

3/15/22

Nordic Woods Quilt

Introducing Andover Fabrics new collection: **RAINBOW WONDERLAND** by Andover Fabrics
Quilt designed by Janet Houts



Quilt finishes 73½" x 87½"
20 Blocks: 13" x 13"

The prints and pieced sashes evoke images of Scandinavian embroidery in this colorful rainbow-hued throw quilt. Easy enough to be a beginner's first quilt, the directions include tips for sewing success.

Cutting Directions

Note: Read assembly directions before cutting patches. All measurements are cut sizes and include ¼" seam allowances. WOF designates the width of fabric from selvedge to selvedge (approximately 43" wide).

Fabric A

Cut (8) strips 2" x WOF for strip-pieced sashes

Fabric B

Cut (15) strips 2½" x WOF pieced to make the following:
(8) sashes 2½" x 74"
Cut (20) squares 1½"

Fabric C

Cut (4) strips 3½" x WOF for strip-pieced sashes
Cut (8) strips 2" x WOF for strip-pieced sashes
Cut (6) strips 1½" x 74", cut lengthwise
Cut (8) strips 2¾" x 13½"
Cut (16) strips 1½" x 13½"
Cut (80) strips 1½" x 6½"
Cut (80) squares 4"
Cut (80) squares 3½"

4 Prints

From each
Cut (20) squares 4"
Cut (20) squares 3½"

Binding

Cut (9) strips 2½" x WOF for binding

Backing

Cut (2) panels 41" x 96", pieced to fit quilt top with overlap on all sides

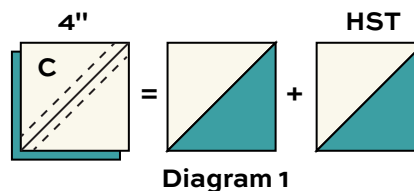
Fabric Requirements

		Yardage	Fabric	
Fabric A	sash	½ yard	326-K	
Fabric B	sash	1¼ yards	329-K	
Fabric C	background	4 yards	*CS-10 Snow	
4 Darks	blocks	½ yard each		
	323-K	324-K	325-K	327-K
Binding		¾ yard	327-K	
Backing		5½ yards	326-K	

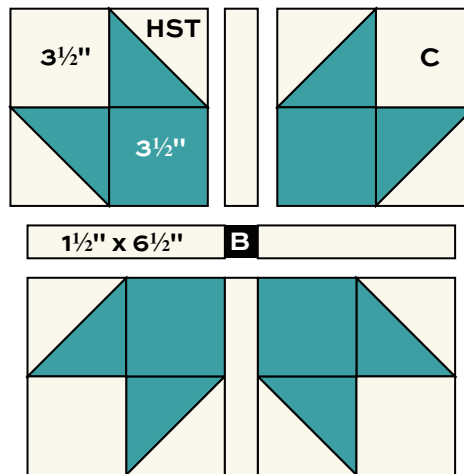
*From Century Solids by Andover Fabrics

Making the Quilt

- The blocks are made with half-square triangles (HST) that finish 3" square (3½" cut-size). Use your favorite method to make HST, or follow these directions. Draw a diagonal line on the wrong side of each Fabric C 4" square. Place a marked square on a print 4" square, right sides together. Sew a ¼" seam on each side of the marked line (Diagram 1). Cut apart on the marked diagonal line to get 2 pieced HST. Press open, and trim each HST to 3½" square. Hint: Use a 4" or larger square acrylic ruler with a diagonal line. Align the diagonal line with the diagonal seam when trimming. Repeat these steps with all the Fabric C and print 4" squares.

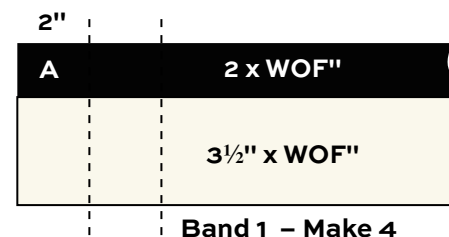


2. Referring to the Block diagram, arrange and join 4 Fabric C $3\frac{1}{2}$ " squares, 4 print $3\frac{1}{2}$ " squares, and 8 HST of the same print into sections. Press seam allowances toward the plain $3\frac{1}{2}$ " squares. Sew the Fabric C strips between the sections as shown. Press seam allowances toward the Fabric C strips. Sew a Fabric B $1\frac{1}{2}$ " square between 2 Fabric C strips to make the middle row. Finally, join the rows to make the block. It should measure $13\frac{1}{2}$ " from raw edge to raw edge. If it does not, adjust your pressing or stitching as needed. Make 5 blocks with each of the 4 prints. Set aside.

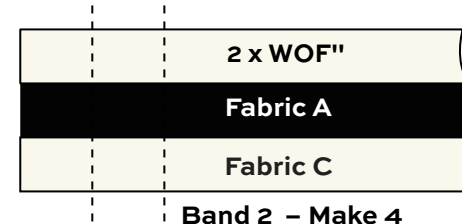


BBlock – Make 20

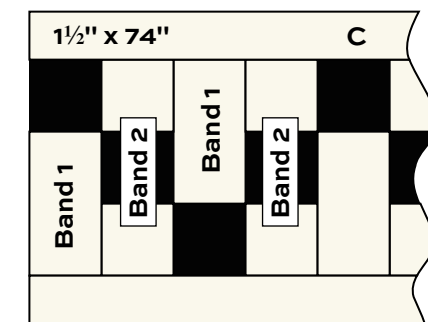
3. The pieced “stair step” sashes are made with quick and easy strip-piecing methods. Long strips are pieced into “bands,” and then segments are cut crosswise. Sew the 2" x WOF Fabric A strip to the $3\frac{1}{2}$ " x WOF Fabric C strip to make Band 1. Press the seam allowance toward the Fabric A strip. Make 4 bands like this. Likewise, sew a Fabric A strip between 2 Fabric C 2" x WOF strips to make Band 2. Press seam allowances toward the Fabric A strip. Make 4 bands like this.



4. From the bands, cut crosswise segments each 2" wide. Cut 19 segments from each Band 1 and 18 segments from each Band 2. Be sure that each cut is perpendicular to the sewn seams of the band. Adjust your cutting as needed. Cut a total of 75 segments from Band 1s and 72 segments from Band 2s.



5. Referring to the Pieced Sash and the Quilt Diagram, alternately join 25 Band 1 segments with 24 Band 2 segments in stair step fashion, rotating the Band 1 segments as shown to make a pieced sash. Make 3 pieced sashes all alike. Sew $1\frac{1}{2}$ " x 74" Fabric C strips to the top and bottom of each pieced sash. Press seam allowances toward the Fabric C strips.



6. Referring to the Quilt Diagram, arrange the blocks in 4 rows of 5 blocks each, distributing the prints as you wish, or following the quilt image. Sew Fabric C $1\frac{1}{2}$ " x $13\frac{1}{2}$ " strips between blocks, and Fabric C $2\frac{3}{4}$ " x $13\frac{1}{2}$ " strips at ends of each row. Press seam allowances toward the Fabric C strips.

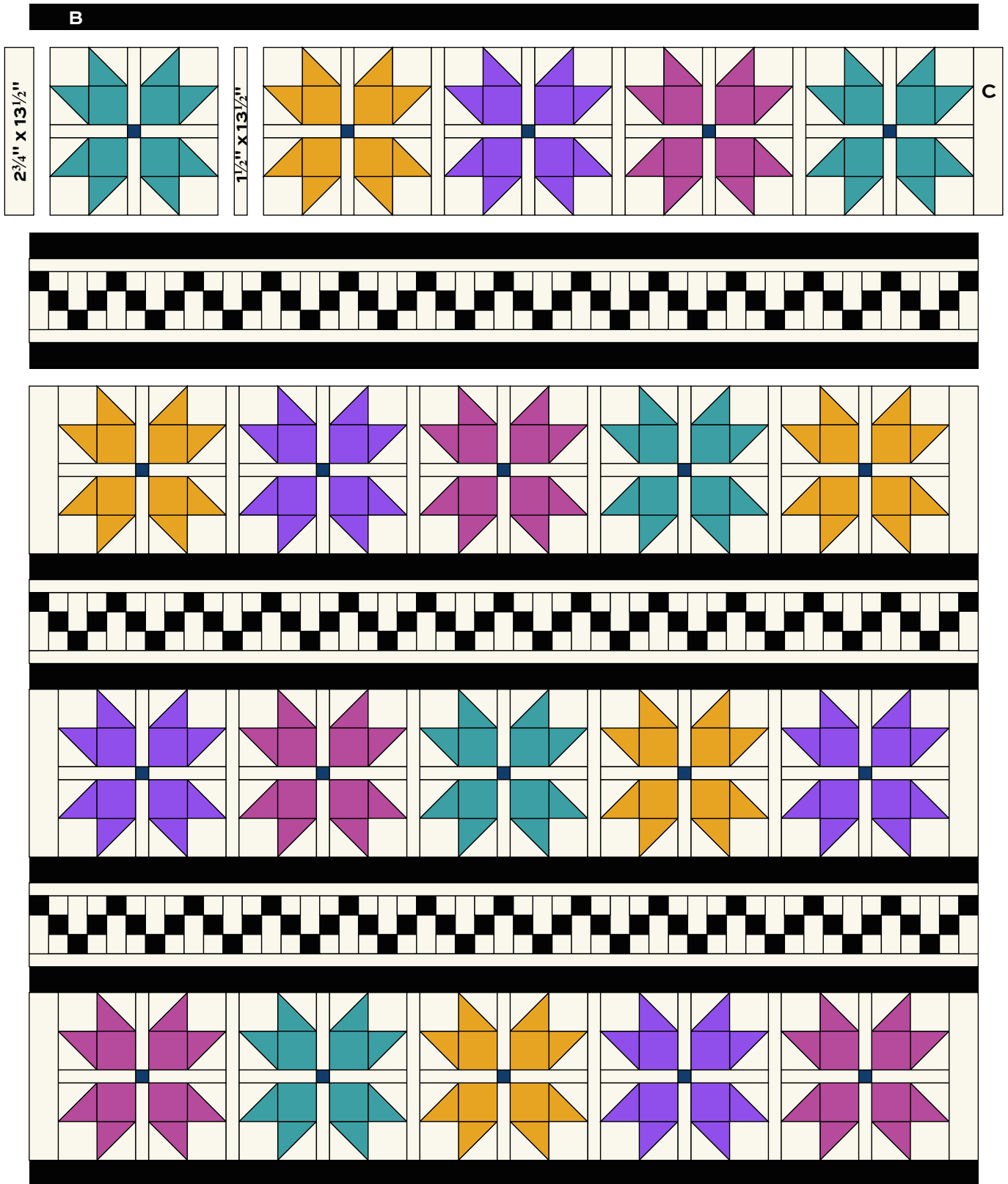
7. Sew the block rows and pieced sashes between Fabric B $2\frac{1}{2}$ " x 74" strips in the order shown. Press seam allowances toward Fabric B.

Finishing the Quilt

8. Layer the quilt with batting and backing and baste. Quilt in the ditch around sashes and block patches. Quilt around the printed motifs in the blocks.

9. The $2\frac{1}{2}$ "-wide binding strips are for double-fold binding. Join the strips end to end to make continuous binding that is about 9 yards long. Press the strip in half lengthwise, with wrong sides together. “Audition” the binding around the quilt to be certain that a joining seam does not land at a corner. Bind to finish the quilt.

Nordic Woods Quilt



Quilt Diagram



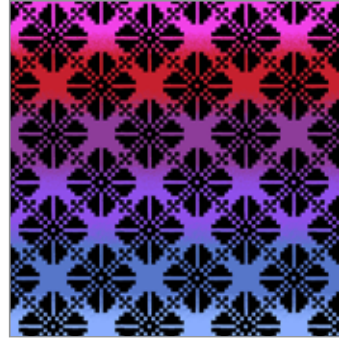
Rainbow Winterland ANDOVER FABRICS



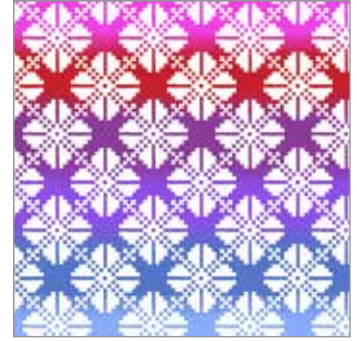
323-K



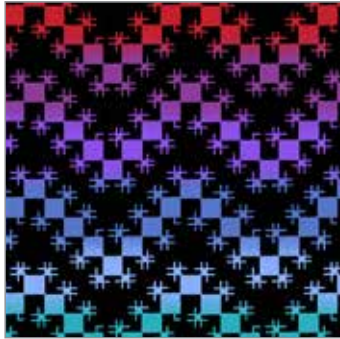
323-L



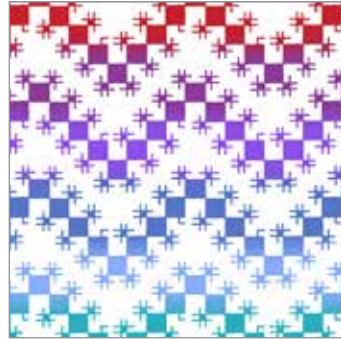
324-K



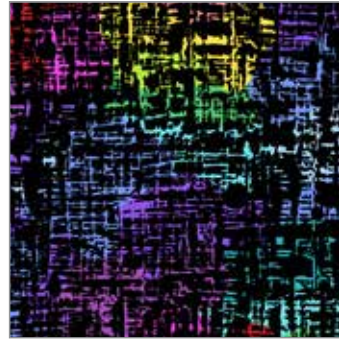
324-L



325-K



325-L



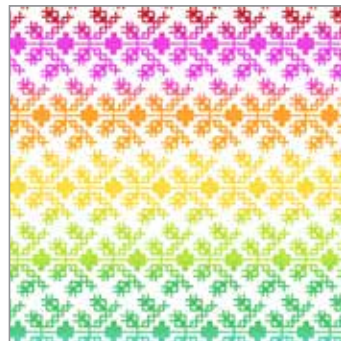
326-K



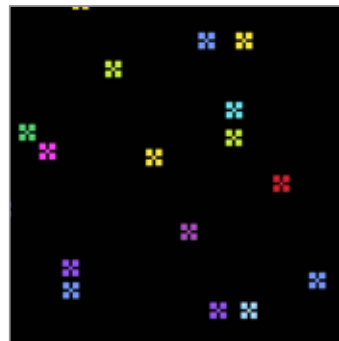
326-L



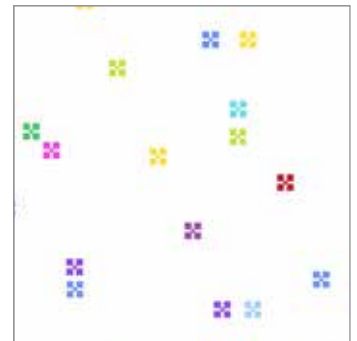
327-K



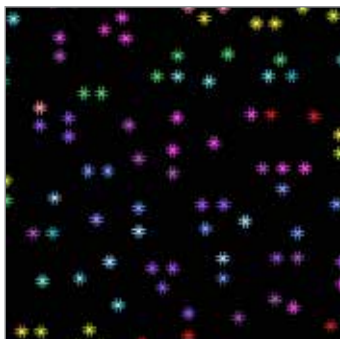
327-L



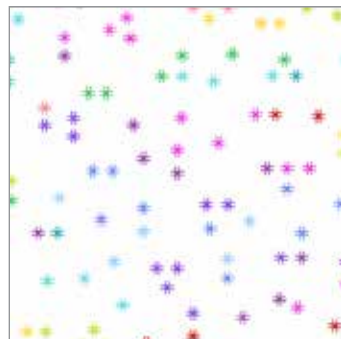
328-K



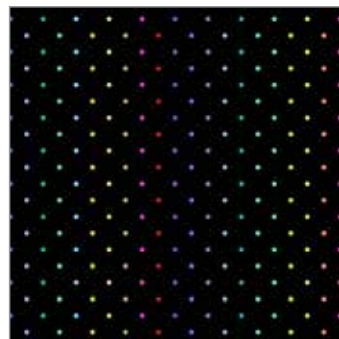
328-L



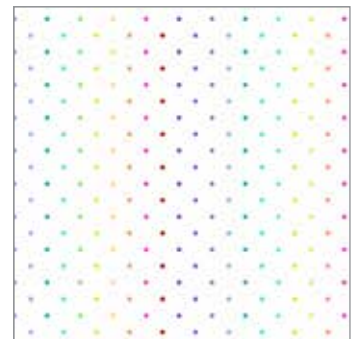
329-K



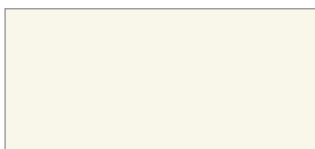
329-L



330-K



330-L



CS-10 Snow*

*Indicates fabrics used in featured quilt pattern.
Fabrics shown are 50% of actual size.